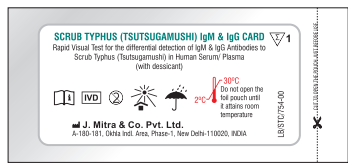


SCRUB TYPHUS (TSUTSUGAMUSHI) IgM & IgG CARD

Rapid Visual test for the qualitative & differential detection of IgM & IgG Antibodies to Scrub Typhus (Tsumugamushi) in Human Serum / Plasma

MATERIAL PROVIDED

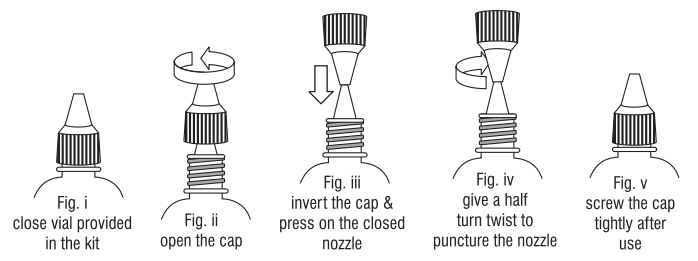


Individually foil pouched test device with a desiccant. Lot No., Mfg. & Exp. date are printed on back of the pouch.



Instruction for use

BEFORE YOU START



PREPARATION FOR THE TEST

1) Carefully read the instruction for use for using the Scrub Typhus IgM & IgG Card Test

2) Bring the required number of test devices, Assay Buffer and specimen to room temperature prior to testing.

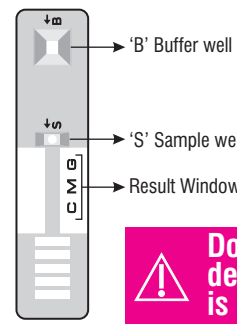
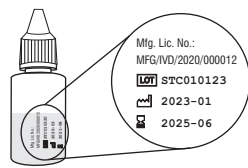
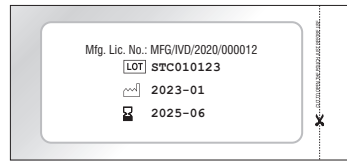
3) Check the expiry date at the back of test device foil pouch and Assay Buffer label. Use fresh kit if expiry date has passed.

4) Cut open the device foil pouch and check the color of the desiccant pouch, it should be blue in color. Do not use the device if desiccant is pink in color.

5) Label the test device with patient's name or identification number.



RT
20-30°C

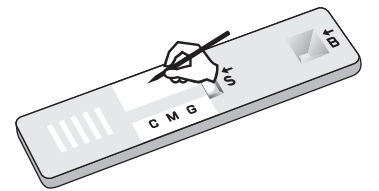


Desiccant in good condition



Pink color desiccant

Do not use the device if desiccant is pink in color



TEST PROCEDURE

1) Specimen collection

Fill the lower circular part of the sample dropper with the specimen upto the mark provided on the dropper as shown in fig. (a-ii).

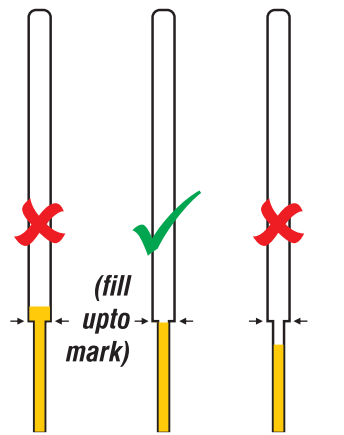


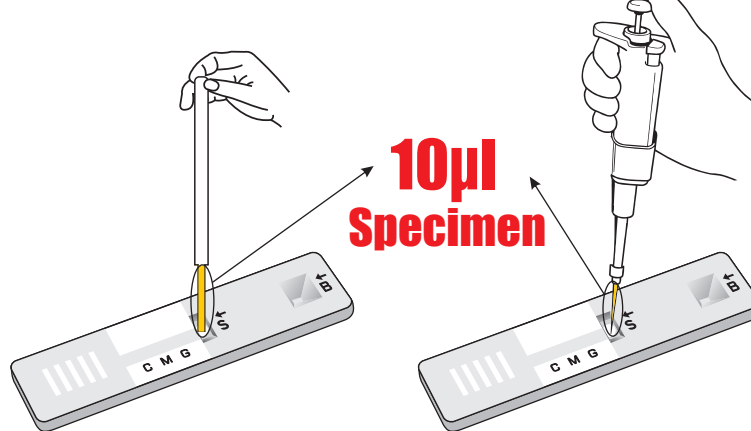
Fig. (a-i) Fig. (a-ii) Fig. (a-iii)

2) Specimen Addition

Add the specimen to the sample well "S" of device.

OR

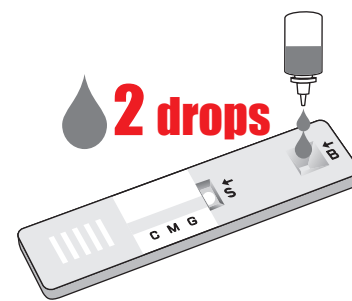
Add 10 µl of specimen using micropipette to the sample well of the device.



Note: Ensure tip of the sample dropper/pipette touches the membrane of the device

3) Assay Buffer Addition

Add 2 drops (70 µl) of Assay Buffer to the Buffer well "B" of the device.



4) Reading Time

Read result at 20 Minutes



20 minutes

Do not read results after 30 minutes

RESULT INTERPRETATION

NON-REACTIVE for scrub typhus antibodies



Only 1 red color band in the control region 'C' indicates that the specimen is non-reactive for Scrub Typhus (tsutsugamushi) IgM & IgG antibodies.

INVALID

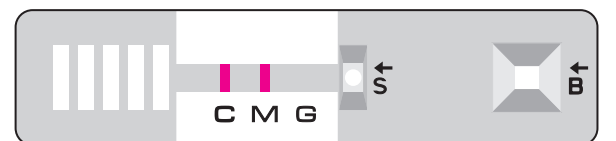


If no control line 'C' appears after the completion of test, the test should be treated as Invalid. Repeat the test using new device.

REACTIVE for scrub typhus IgM & IgG antibodies



REACTIVE for scrub typhus IgM antibodies



REACTIVE for scrub typhus IgG antibodies



Appearance of red coloured line in the control region 'C' and Test region; IgM region 'M' and / or IgG region 'G' indicates that the specimen is reactive for Scrub Typhus (tsutsugamushi) IgM & / or IgG antibodies.