

CLIA-2000

AUTOMATIC CHEMILUMINESCENCE IMMUNOASSAY ANALYZER

90

Test Parameters

200

Throughput per hour

25

Reagent Positions

60

Sample Positions

500

Assay Cup Capacity



Unleash the power of Cutting-edge Technology for
Unparalleled Diagnostic Accuracy.



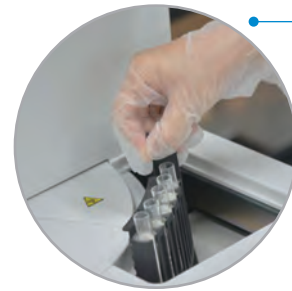
Scan QR Code to
visit our Website



J. Mitra & Co. Pvt. Ltd.

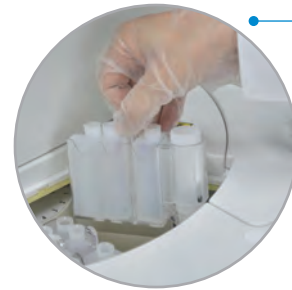
.....a vision to serve mankind[™]

ANALYZER HIGHLIGHTS



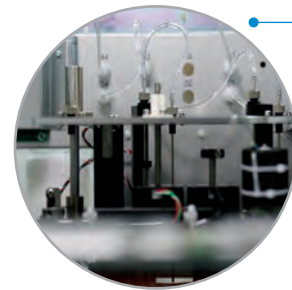
SAMPLE LOADING

Total of 60 sample positions.
STAT channel available for emergency samples at any time



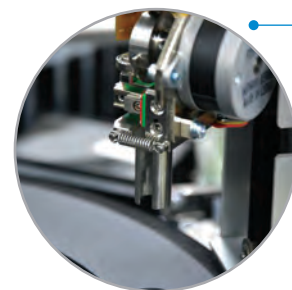
REAGENT LOADING

It adopts one-piece disc structure with a total of 25 reagent positions.
24 hour uninterrupted refrigeration & holding.



WASHING

Intelligent magnetic field design to ensure good separation & improves washing efficiency.



GRIPPER

The assay cup gripper is composed of a set of manipulators in 3D motion, which can transfer the assay cups to the set work station accurately.



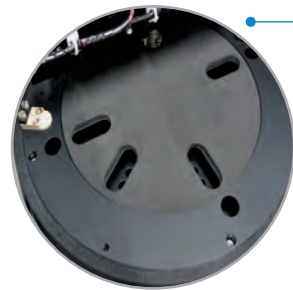
SR PROBE

Single Steel probe for both sample & reagent to reduce maintenance costs. Interior and exterior washing design ensuring carryover < 10ppm without clot, air bubble and liquid level detection.



MIXER

High speed non-touch vortex mixing to avoid contamination.



REACTION

A 120-well incubation module providing a consistent reaction environment.



SOFTWARE DESIGN

15-inch color LED touch screen, no mouse or keyboard required.

Real-time consumables management to add or replace consumables at any time.

Optimized alarm classification to maximize the completion of existing tests

TEST PARAMETERS

DENGUE

Dengue NS1 Ag iClia
Dengue IgM iClia
Dengue IgG iClia

VECTOR BORNE

Lepto IgM iClia
Chikungunya IgM iClia
Scrub Typhus IgM iClia

TYPHOID

Typhi IgM iClia

INFECTIOUS MARKERS

HIV Ag & Ab iClia
HCV iClia
HBsAg iClia
Syphilis iClia

AUTOIMMUNE

APL iClia*
ACL iClia*
ANA iClia
Anti-ds DNA iClia
Anti-CCP iClia
GAD-65 iClia*
Celiac (anti-tTG) iClia
Anti-SCL 70 iClia*

THYROID

TSH iClia
FT4 iClia
FT3 iClia
T3 iClia
T4 iClia
Tg iClia
Anti-TPO iClia
Anti-Tg iClia

* Coming soon.

HORMONES

Testosterone iClia
FSH iClia
LH iClia
E2 (Estradiol) iClia
Prolactin iClia
 β -HCG iClia
Cortisol iClia
Progesterone iClia

REPRODUCTIVE HORMONES

AMH iClia
Inhibin-A iClia*
PAPP-A iClia*
uE3 iClia*
free- β -HCG iClia*

INFLAMMATION MONITORING

PCT iClia
SAA iClia*
CRP iClia*
IL-6 iClia
HBP iClia*

INFLAMMATION MONITORING

Anti-IgE iClia

CARDIAC MARKER

hs-Troponin-I iClia
hs-cTnT iClia*
CK-MB iClia
Myoglobin iClia
ST2 iClia*
LA-PLA2 iClia*
D-Dimer iClia
H-FABP iClia*
S100- β iClia*
BNP iClia
NT-proBNP iClia

TORCH RANGE*

Toxo IgM iClia
CMV IgM iClia
Rubella IgM iClia
Herpes IgM -I/II iClia
Toxo IgG iClia
CMV IgG iClia
Rubella IgG iClia
Herpes IgG-I/II iClia
Herpes IgG-II iClia

TUMOR RANGE

AFP iClia
CEA iClia
CA125 iClia
CA15-3 iClia
CA19-9 iClia
t-PSA iClia
f-PSA iClia
NSE iClia*
CYFRA21-1 iClia*
HE4 iClia*
PG-I iClia*
PG-II iClia*
SCCA iClia*
 β 2-MG iClia*
ProGRP iClia*
CA72-4 iClia*

ANEMIA

Vitamin B12 iClia
Folate iClia*
Ferritin iClia

GLYCOMETABOLISM

C-Peptide iClia
Insulin iClia

BONE METABOLISM

Vitamin D iClia
PTH iClia
hGH iClia*

TECHNICAL SPECIFICATIONS

Degree of Automation	Fully Automatic											
Principle	AE based CLIA											
Sample Type	Human Serum, Plasma, Whole Blood, Urine samples											
Throughput	200 tests/hour (max.)											
First Result	≤ 15 minutes											
Assay Cup	Disposable (Loading capacity: 500 cups)											
Sample Position	60 Nos.											
Reagent position	25 Nos.											
Reagent Mixing	Non-touch rotary mixing for magnetic particles											
Reagent Volume	10 - 200 μ l											
Reagent Refrigeration	24-hrs. refrigeration with a temperature of 2-8°C at reagent disk											
Sample adding accuracy and repeatability	<table border="1"> <thead> <tr> <th rowspan="2">Sample volume (v/μL)</th> <th colspan="2">Requirement</th> </tr> <tr> <th>Bias</th> <th>Coefficient of Variation (CV%)</th> </tr> </thead> <tbody> <tr> <td>5</td> <td>≤ ±5%</td> <td>≤ 2%</td> </tr> <tr> <td>200</td> <td>≤ ±3%</td> <td>≤ 1%</td> </tr> </tbody> </table>	Sample volume (v/ μ L)	Requirement		Bias	Coefficient of Variation (CV%)	5	≤ ±5%	≤ 2%	200	≤ ±3%	≤ 1%
	Sample volume (v/ μ L)		Requirement									
		Bias	Coefficient of Variation (CV%)									
5	≤ ±5%	≤ 2%										
200	≤ ±3%	≤ 1%										
Linear Correlation	Linear correlation coefficient (r) ≥ 0.99, within a concentration range of not less than 3 orders of magnitude											
Carryover Rate	≤ 5 × 10 ⁻⁶											
Intra-batch precision of clinical test	≤ 8% (CV, %)											
Dimensions	L-1000 mm x W-670mm x H-640mm											
Product Weight	Net weight: 129 kg											
Normal Working Conditions	Power Voltage: 100-240V~, 50/60 Hz											
	Input power: 1000 VA											
	Fuse: F6.3 L250 V											
	Ambient temperature: 10°C~30°C											
Storage Conditions	Relative humidity: ≤ 85%, no condensation											
	Temperature: -20°C~55°C; Humidity: ≤ 93%											
Hardware Configuration	Processor: RAM 2GB, main frequency 4x1 GHz or above											
	Memory: 8GB or above											
	Software environment: Operating system of Linux 4.1 and above											
Security Interface	USB 2.0 and Ethernet RJ45 interface											
	Protocol: USB 2.0 interface is used to upgrade the program.											
	Ethernet RJ45 is used to send to the LIS system through the network.											
	The test results are stored in the AssayDB.db file											

Also Connect with us on:



ISO 13485:2016
ICMED 13485



For further enquiries, Please contact:

J. Mitra & Co. Pvt. Ltd.

A 180-181, Okhla Indl. Area, Phase-1, New Delhi - 110 020, INDIA

Tel: +91-11-47130300, 47130500

E-mail: jmitra@jmitra.co.in

Website : www.jmitra.co.in