

Since 1969



Scrub typhus spreads through bites of infected mites

**For the most Reliable
Diagnosis of Scrub Typhus**

SCRUB TYPHUS (TSUTSUGAMUSHI) IgM & IgG CARD



Rapid Visual test for the Differential Detection of IgM & IgG antibodies to Scrub Typhus in Human Serum/ Plasma

SCRUB TYPHUS IgM MICROLISA



Microwell ELISA Test for the Detection of Scrub Typhus IgM Antibodies in Human Serum/ Plasma

...precision and Accuracy, Guaranteed

Know about Scrub Typhus Disease

Scrub typhus is a mite-borne infectious or zoonotic infection, a disease caused by a bacteria called *Orientia tsutsugamushi*. The infection is found in South East Asia and western Pacific islands. The causative organism, *Orientia tsutsugamushi*, belongs to family Rickettsiaceae is transmitted to humans by the bite of a larval trombiculid mite or chigger. A cigarette burn-like sore, called an eschar, sometimes develops at the site of infection. Swollen lymph glands also are common.

The most common symptoms of scrub typhus include fever, headache, body aches, and in many patients, rash and an eschar at the site of the chigger bite.

In the Indian scenario, there is a higher case fatality of 14% when presenting with complications.



Health problems in Scrub Typhus

- Interstitial pneumonia leading to ARDS (Acute Respiratory Distress Syndrome)
- Renal failure
- Septic shock
- Jaundice
- Meningoencephalitis
- Myocarditis

Diagnosis of Scrub Typhus Disease

The diagnosis is suggested by the clinical history and physical findings and confirmed by serologic testing or biopsy of an eschar. Several methods are effectual for diagnosis of scrub typhus that includes enzyme-linked immunosorbent assay (ELISA), immunofluorescence assay (IFA), immunochromatographic test (ICT), polymerase chain reaction (PCR) and loop-mediated isothermal amplification (LAMP). Immuno-based Serological methods like IFA and ELISA are most outrank for detection of scrub typhus due to their higher sensitivity and specificity.

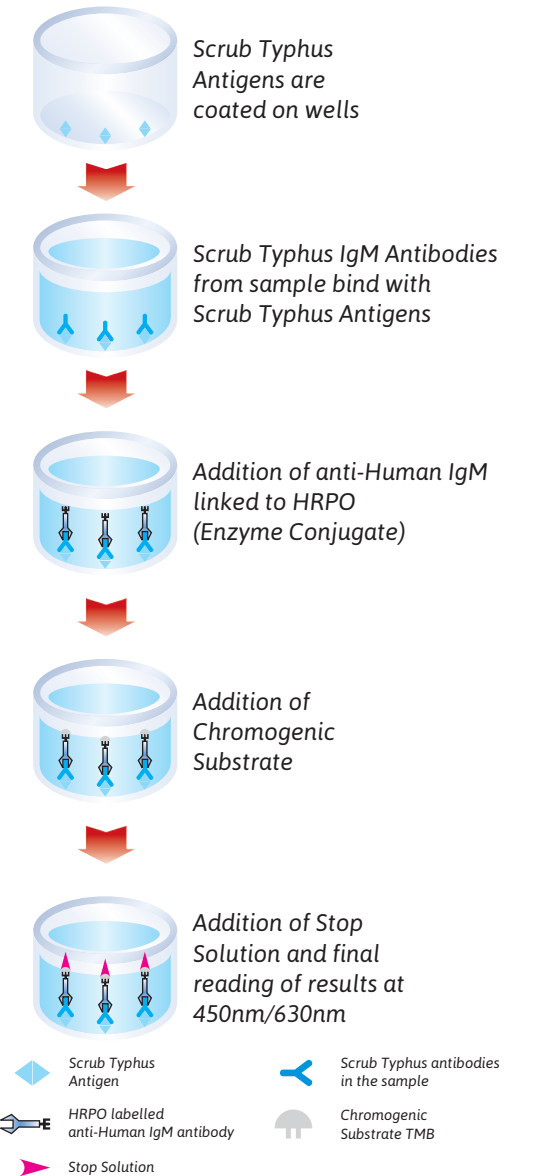
SCRUB TYPHUS IgM MICROLISA

Microwell ELISA Test for the Detection of Scrub Typhus IgM Antibodies in Human Serum/ Plasma

TEST PROCEDURE

Dilute Sample (1:101) sample 5 µl + sample diluent 500 µl	
Add 100 µl diluted samples & controls	
Cover the plate & incubate for 30 minutes at 37°C	
Wash 5 Cycles	
Add 100 µl Enzyme Conjugate	
Cover the plate & incubate for 30 minutes at 37°C	
Wash 5 Cycles	
Prepare Working Substrate	No. of strip 1 2 3 4 5 6 7 8 9 10 11 12 TMB Substrate (ml). 0.5 1.0 1.5 2.0 2.5 3.0 3.5 4.0 4.5 5.0 5.5 6.0 TMB Diluent (ml). 0.5 1.0 1.5 2.0 2.5 3.0 3.5 4.0 4.5 5.0 5.5 6.0
Add 100 µl working Substrate	
Cover the plate & incubate for 15 minutes at Room Temperature	
Add 100 µl Stop Solution and Read Results 450 nm./630 nm.	

TEST PRINCIPLE



- Based on "Indirect ELISA"
- Excellent Sensitivity: **100%** & Specificity: **98.58%**
- Ready to use Enzyme Conjugate
- Colour Coded reagents to monitor procedural steps
- Assay Procedure: **75 minutes**
- Shelf Life : **18 Months at 2-8°C**
- Unique Break-away wells

SCRUB TYPHUS (TSUTSUGAMUSHI) IgM & IgG CARD

Rapid Visual test for the Differential Detection of IgM & IgG antibodies to Scrub Typhus in Human Serum/ Plasma



Available Packsize:
20 Tests & 50 Tests

- **Based on Immunochromatography Technique**
- **Excellent Sensitivity: 100% & Specificity: 100%**
- **Results within 20 minutes**
- **Long Shelf life: 24 Months at 2-30°C**
- **Bio-hazard free, fully covered, see-through Device**
- **No Instruments required**

TEST PROCEDURE

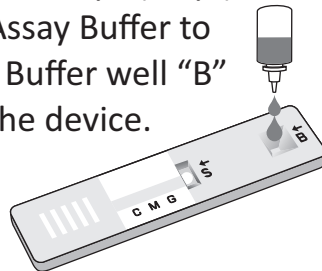
Step-1

Add 10 µl specimen using Sample Dropper to the sample well "S" of the device.



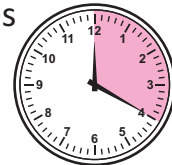
Step-2

Add 2 drops (70 µl) of Assay Buffer to the Buffer well "B" of the device.



Step-3

Read results at 20 minutes



⚠ Do not read results after 30 minutes

RESULT INTERPRETATION

Reactive for Scrub Typhus IgM & IgG antibodies



Reactive for Scrub Typhus IgM antibodies



Reactive for Scrub Typhus IgG antibodies



Non-Reactive for Scrub Typhus antibodies



Invalid



Invalid



If no control line 'C' appears after the completion of test, the test should be treated as Invalid. Repeat the test using new device.

Also Connect with us on:



For further enquiries, Please contact:

J. Mitra & Co. Pvt. Ltd.

A 180-181, Okhla Indl. Area, Phase-1, New Delhi - 110 020 - INDIA

Tel: +91-11-47130300, 47130500

E-mail: jmitra@jmitra.co.in

Website : www.jmitra.co.in